



Pan American
Health
Organization



REGIONAL OFFICE FOR THE

World Health
Organization

Americas

Where are we now?

- A regional update -

...

Ms. Pamela Bravo

September 9, Washington DC

Outline

1 Current epidemiological situation

2 Most critical challenges for sustaining the gains

3 Focused planning for 2015

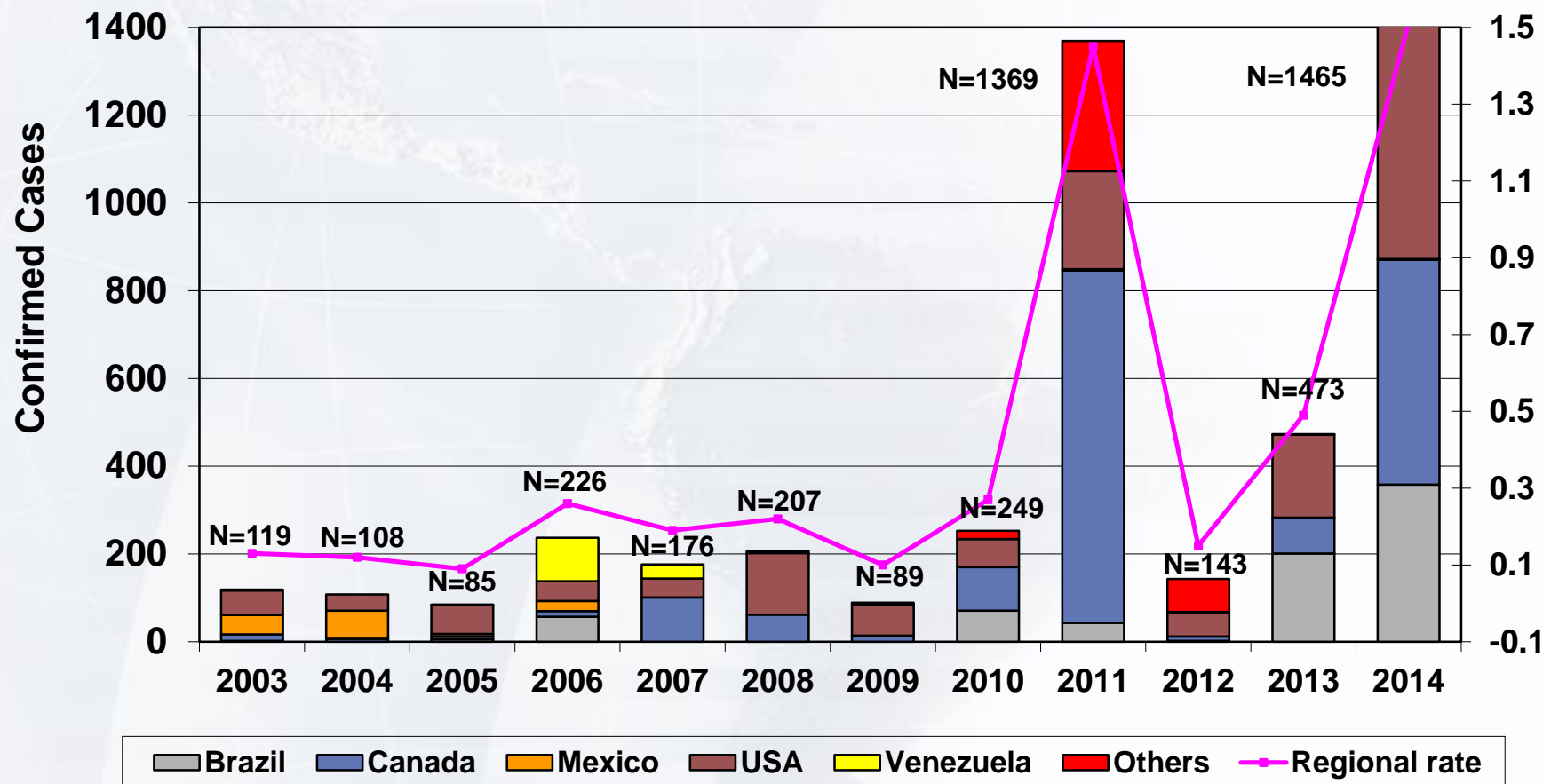


Pan American
Health
Organization



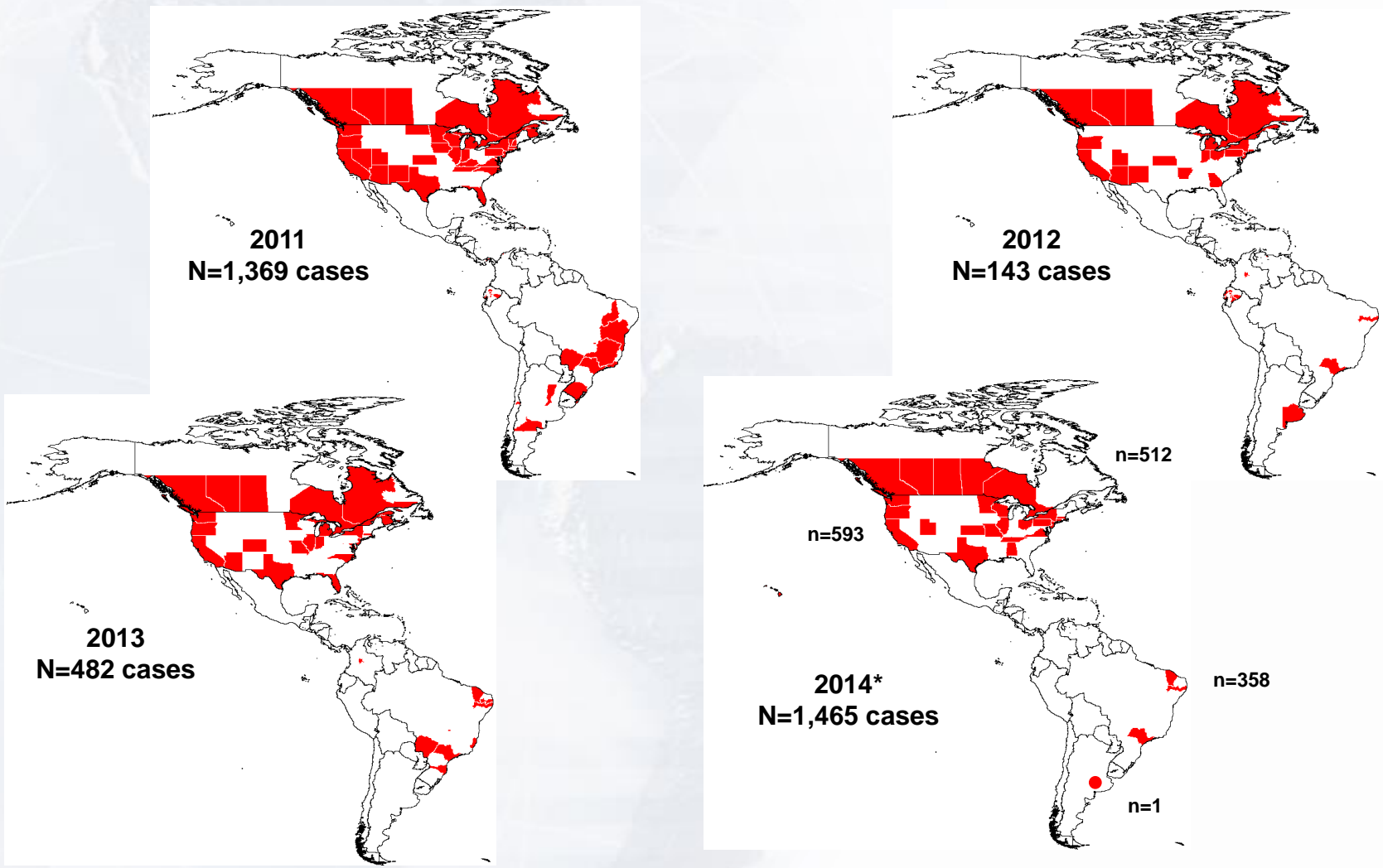
World Health
Organization
REGIONAL OFFICE FOR THE
Americas

Distribution of Confirmed Measles Cases Following the Interruption of Endemic Transmission, the Americas, 2003-2014*



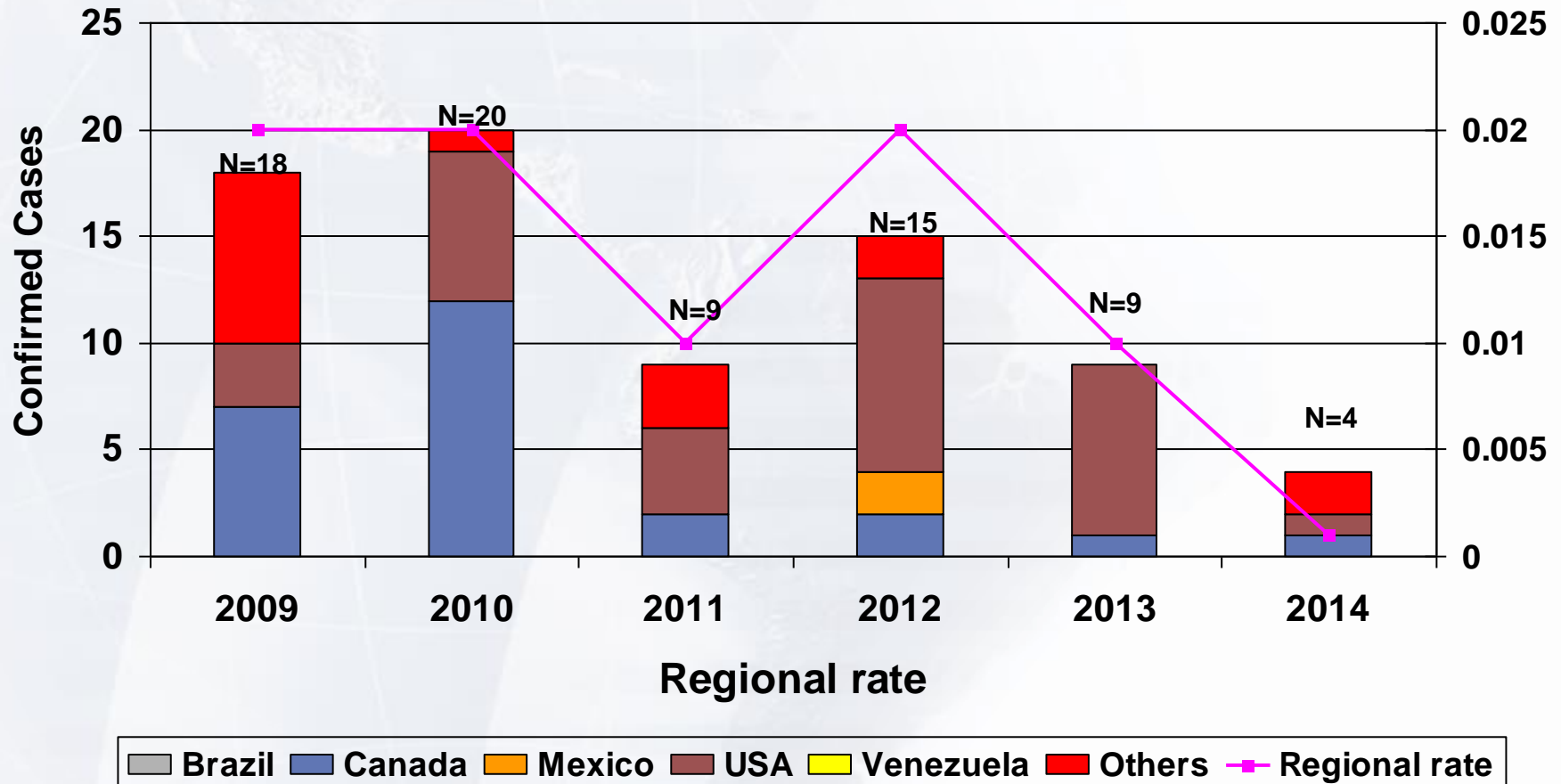
Source: Country reports to FGL-IM/PAHO
 * Data as of epidemiological week 34, 2014

Confirmed measles cases by second administrative level Latin America and the Caribbean, 2011-2014*



Source: Country reports to FGL-IM/PAHO
* Data as of epidemiological week 34, 2014

Distribution of Confirmed Rubella Cases Following the Interruption of Endemic Transmission, the Americas, 2003-2014*



Source: MESS, ISIS and country reports.
* Data as of epidemiological week 34 2014



Pan American
Health
Organization



World Health
Organization
REGIONAL OFFICE FOR THE
Americas

Measles Genotypes identified in Confirmed Cases The Americas, 2008-2014*

Country	2008				2009			2010						2011					2012				2013						2014*										
	D4	D5	D8	H1	B3	D4	H1	B3	D3	D4	D8	D9	G3	H1	B3	D4	D8	D9	G3	H1	B3	D4	D8	D9	B3	D3	D4	D7	D8	D9	H1	B3	D4	D6	D8	D9	H1		
Argentina			1			1		3							1							1																	
Brazil								14		2					24			1				1	1			1		1		81			1						
Canada	1	2	31			8		3		3	8	2	2	34	3	134	4	5				5	1	2		15				34		2	62	2	1	33	5	2	
Chile															8			1																					
Colombia															6							1							*										
Ecuador	1														45	1						22																	
USA	10	7		1	1	26	3	4	3	5	6	7		3	10	63	7	16	9	1	11	4	10	1	11	1	3	1	40	8	5	86				15	38	2	
Total	12	9	32	1	1	35	3	20	3	5	8	3	2	34	58	236	11	21	10	1	38	8	13	1	27	1	4	1	155	8	7	171	2	1	112	43	4		

Genotype	B3	D3	D4	D7	D8	D9	G3	H1
Quantity	315	4	302	1	332	76	12	50

*Source: MeaNS Data until 29 August 2014, Sequences of N gene (black) and Country report (red)
Data as of epidemiological week 34 2014

Outline

1 Current epidemiological situation

2 Most critical challenges for sustaining the gains

3 Focused planning for 2015



Pan American
Health
Organization



World Health
Organization
REGIONAL OFFICE FOR THE
Americas

Rate of suspected measles and rubella cases.

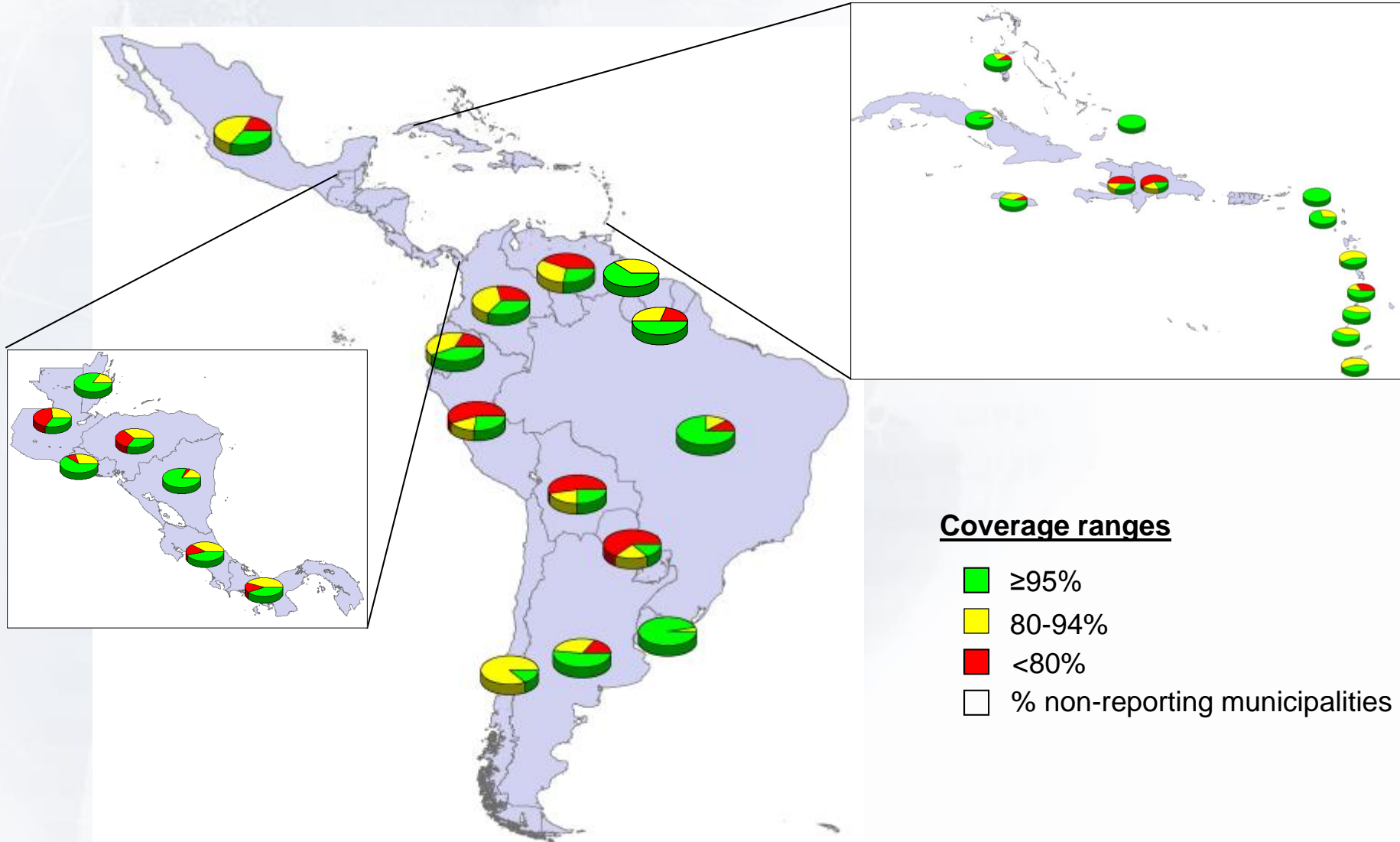
Last 33 weeks, 2014

(expected rate for EW 33=1.27)

Countries	Suspected cases EW 33	Population data 2012*	Reported rate for EW 3
CHL	106	16,970,265	0.62
ARG	120	40,276,376	0.30
DOM	39	10,090,151	0.39
CRI	26	4,578,945	0.57
BOL	78	9,862,860	0.79
PER	234	29,164,883	0.80
HND	60	7,465,998	0.80
HTI	90	10,032,619	0.90
VEN	333	28,583,366	1.17
GTM	164	14,026,947	1.17
NIC	80	5,742,800	1.39
BRA	3,322	193,733,795	1.71
MEX	2,541	109,610,036	2.32
COL	1,254	45,659,709	2.75
CAR	245	7,476,254	3.28
PRY	224	6,348,917	3.53
PAN	177	3,453,898	5.12
CUB	653	11,204,180	5.83
SLV	368	6,163,050	5.97
Total	10,046	560,445,049	1.80

 Active-case finding underway

Proportion of municipalities with different MMR1 coverage levels in children 1 year of age Latin America and the Caribbean, 2013



Coverage ranges

- ≥95%
- 80-94%
- <80%
- % non-reporting municipalities

Follow-up campaigns with MR containing vaccine

The Americas. 2009-2013*

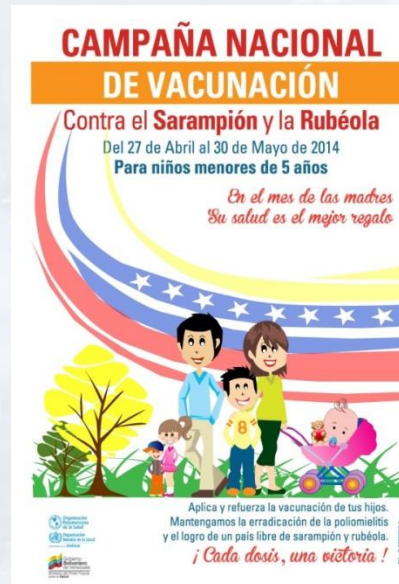
Country	Vaccine	Age Group (years or months when stated)	Year of campaign	Population Reached	Population targeted	Reported Coverage (%)
Argentina	MR	1-4	2009	2.766.691	2.814.607	98
Bolivia	MR	2-5	2011	691.291	917.546	75
Bolivia	MMR	1-4	2011-2012	859.785	917.546	93,7
Brazil	MMR	1-7	2011	16.813.465	17.094.519	98,4
Colombia	MR	1-8	2010	6.406.167	6.854.805	93,4
Colombia	MR	10-20	2011-2012	7.752.514	8.766.124	88
Costa Rica	MMR	15m-10	2011	585	630	93
Dominica	MMR	1-3	2013	1.433	1.839	78
Dominican Rep.	MMR	1-8	2010	1.579.280	1.503.901	100**
Ecuador	MR /MMR	6m-14	2012	4.700.526	4.184.003	100
El Salvador	MMR	4,12*	2012	230.661	251.057	91,9
Haiti	MR	9m-9	2012	2.963.911	2.522.396	100**
Honduras	MMR	1-4	2012	710.166	847.407	84
Jamaica	MMR	1-10	2012	602	801	75
Mexico	MR	1-4	2010	7.563.521	7.303.032	100**
Nicaragua	MR	1-4	2012	521.268	559.985	93,1
Paraguay	MR/MMR	1-8	2009	973.980	1.166.828	83
Peru	MR	1-4	2011	2.353.932	3.025.500	78
St. Kitts and Nevis	MMR	1-4	2011	2.359	2.100	100**

58.7 million children and adolescents vaccinated

* This campaign included only children 4 years old and 12 years old; ** reported coverage >100%

Maintaining Measles/Rubella Elimination by Ensuring a Second Vaccination Opportunity, The Americas, 2014-2015*

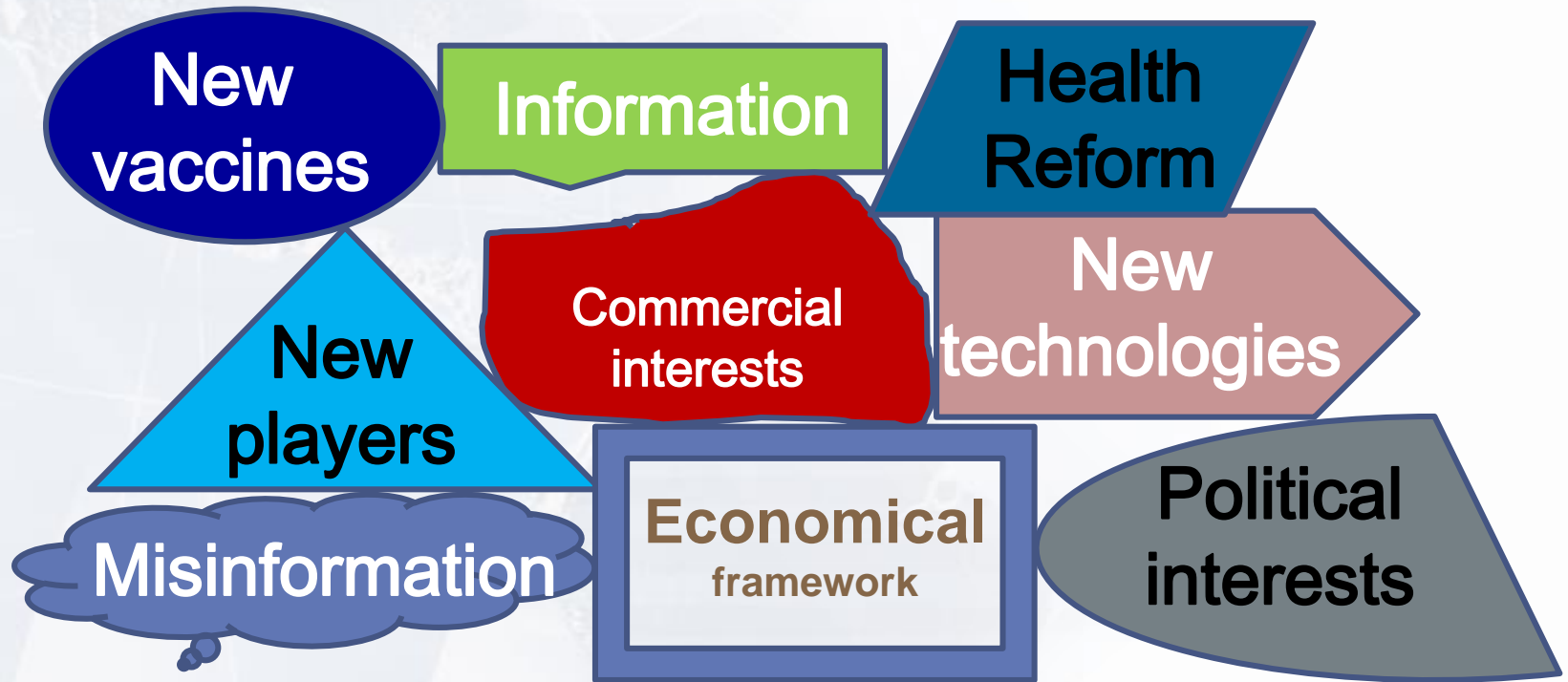
Country	Vaccine	Target Age	Dates	Geographic Extent
Argentina	MMR and OPV	< 5yr	1 Sept- Oct 31	nationwide
Brazil	MMR and OPV	< 5yr	8-28 Nov.	nationwide



- Target group: **2,479,348**
- Reached: **2,511,076**
- Coverage: **>100%**

Source: Country reports to PAHO

Dynamics and challenges



GLOBAL VACCINATION ACTION PLAN (GVAP)

MEASLES/RUBELLA SUSTAINABILITY PLAN - AMRO

We are
Mome
ntum



Winners of the simulation exercise lift “The Cup” as a sign of triumph in Uruguay, MR-outbreak response workshop

- E-learning
- Outdoor coaching
- Simulation
- Involving scientific societies

<http://www.sochinf.cl/sitio/index.php?id=273>

Outline

1 Current epidemiological situation

2 Most critical challenges for sustaining the gains

3 Focused planning for 2015



Pan American
Health
Organization



World Health
Organization
REGIONAL OFFICE FOR THE
Americas

STAY ALERT!

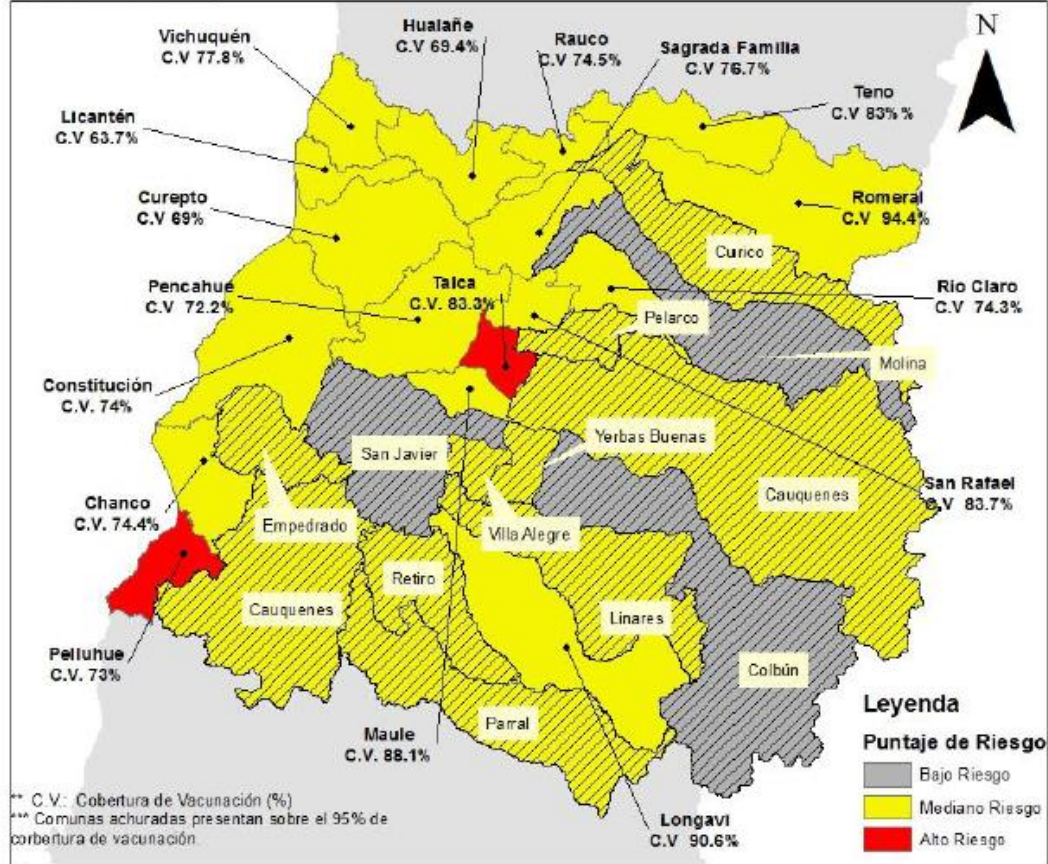
NEVER LET YOUR GUARD DOWN

1. Strengthen efficiency in program implementation (immunization and surveillance), including rapid response at national and sub-national level.
 - Foster data ownership and refined analysis to make informative decisions.
2. Close the population immunity gaps through SIAs, intensification of vaccination activities (vulnerable groups) and policy changes (MMR2).
3. Consolidate the way-forward of the verification process.

Risk Assessment Analysis

ZONAS DE RIESGO PARA LA INTRODUCCIÓN DE CASOS IMPORTADOS DE SARAMPIÓN Ó RUBÉOLA REGIÓN DEL MAULE, 2013

Seroprevalencia
Sarampión 88%
Rubéola 95%

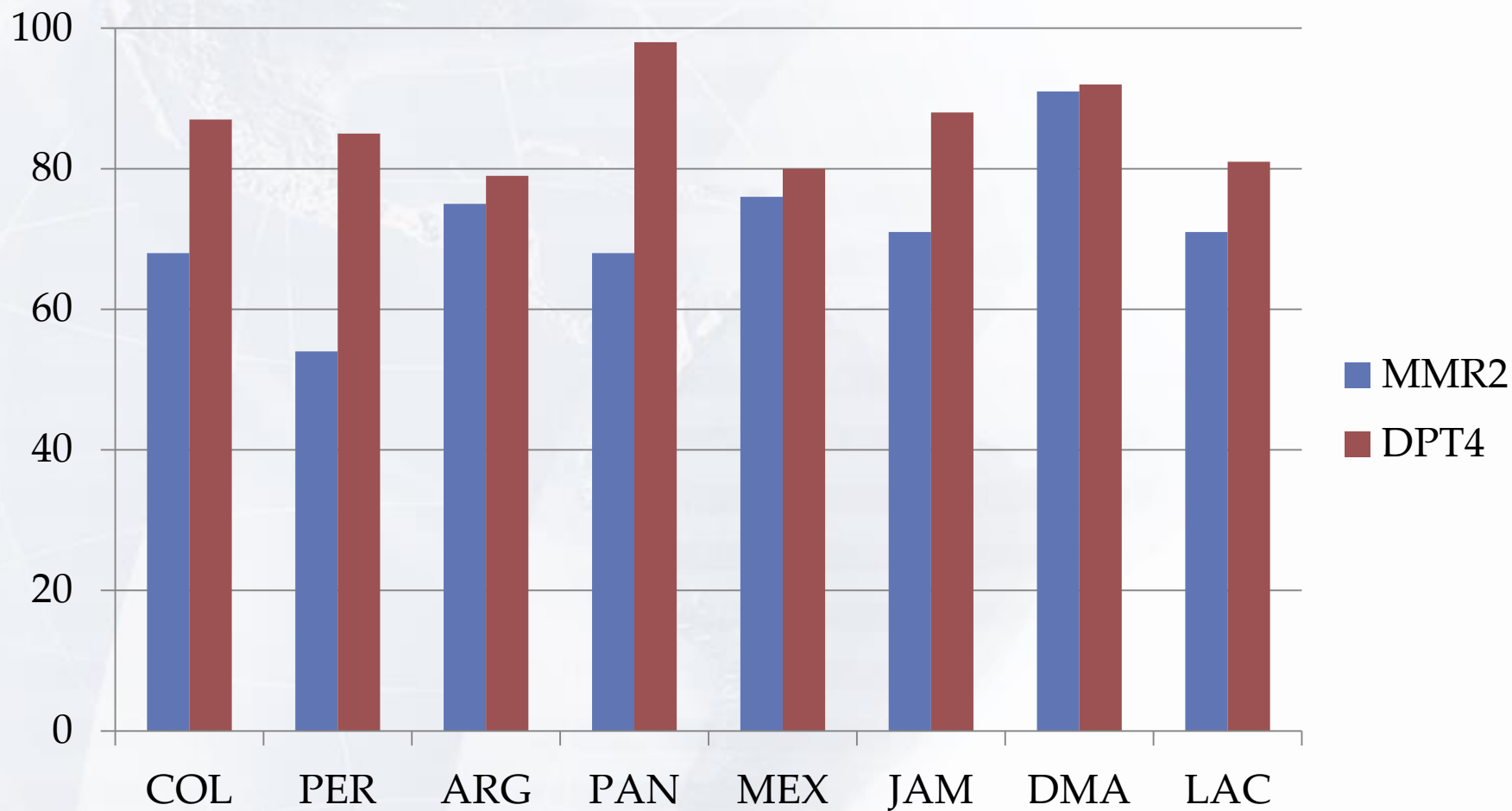


Centro Nacional de Enlace
 Departamento de Epidemiología
 DIPLAS- MINSAL 2014

WGS 1984 Zona 19 S

Immunity gaps

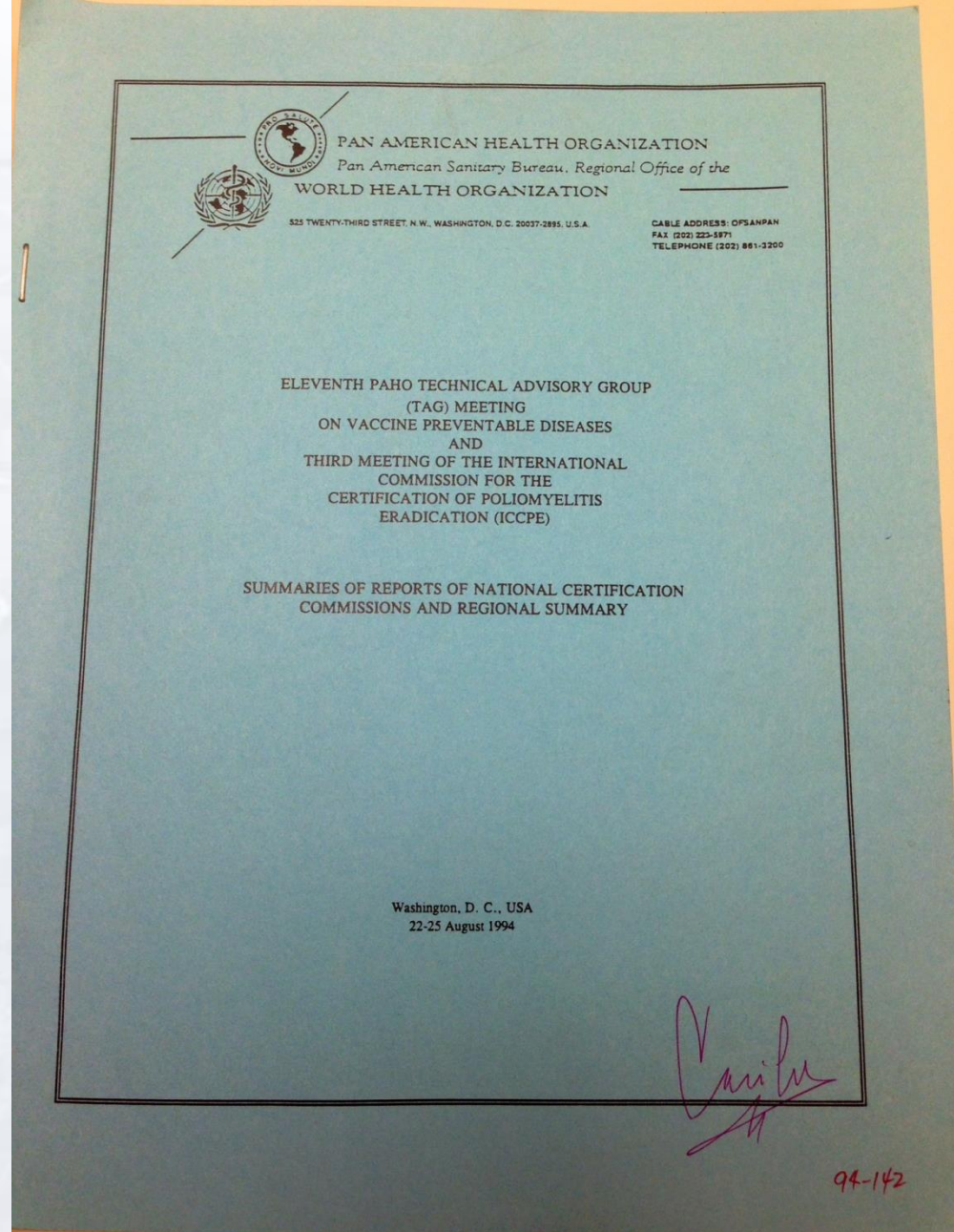
MMR2 and DPT reported coverage: Selected countries and LAC, 2013*



**TAG 2013: Simultaneously
administration of MMR 2 and DPT4**

Recognizing country efforts

- Summary of measles/rubella elimination reports reviewed and signed by the IEC members.
- Verification checklists for updates.





Thank you!

Email: immunization@paho.org

Web: www.paho.org/immunization