

**CURRENT MEASLES STATUS
AND
PLANS FOR MEASLES CONTROL
IN 2015 – 16 IN NIGERIA**

@

13TH ANNUAL MEETING OF

**THE MEASLES RUBELLA INITIATIVE- 9-10 SEPT. 2014
HELD AT**

AMERICAN RED CROSS NATIONAL HQS

WASHINGTON DC, U.S.A -PHARM C .N. EKPEMAUZOR

OUTLINE

- 1. Profile of Nigeria*
- 2. Background*
- 3. Current Measles Status*
- 4. 2013 Integrated Measles campaign*
- 5. Plans for Measles Control in 2015 -2016*
- 6. Challenges and Conclusion*

PROFILE OF NIGERIA

Total population: 180,049,323

No. Geopolitical Zones: 6

No. of States: 36 + FCT

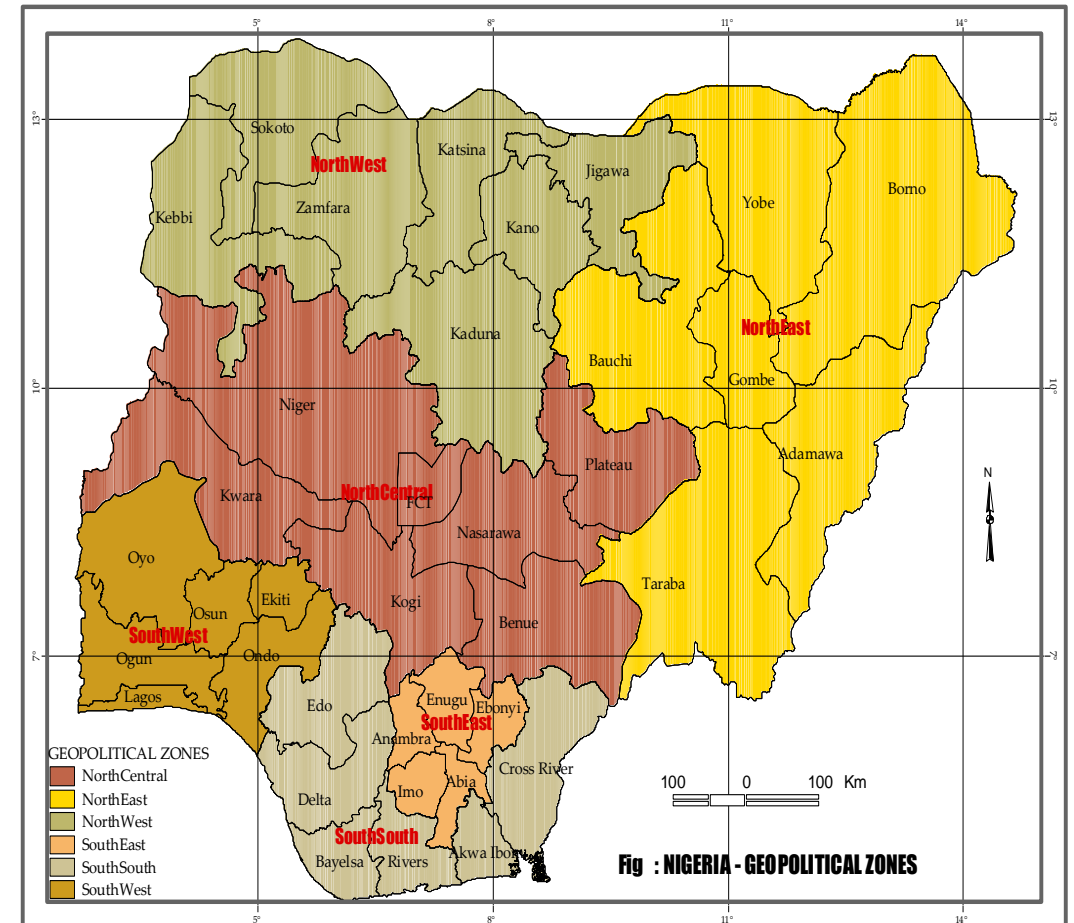
No. of LGAs: 774

No. of wards: 9,550

No. of public health facilities: 21,143

No. of private health facilities: 7,999

Map of Nigeria showing the Geopolitical Zones

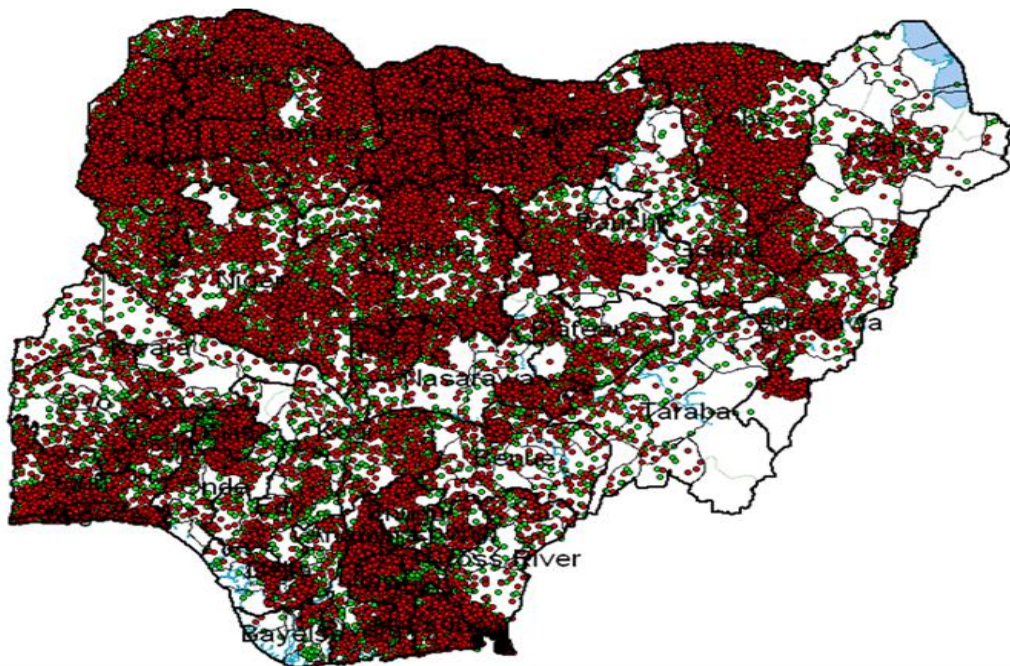


BACKGROUND

- **Measles is endemic in Nigeria and is a leading cause of under five mortality and morbidity**
- **In line with the Global elimination plan, Nigeria's objective was to reduce measles mortality by 95% in 2015 and achieve elimination by 2020.**
- **Measles vaccination directly contributes to the reduction of <5yr mortality and hence to the achievement of MDG 4 of reducing < 5yr mortality rate by 2/3 by 2015.**
- **From 2005-2014 Nigeria conducted 1 catch up campaign in 2005 and 3 follow –up campaigns in 2008 , 2011 & 2013.**

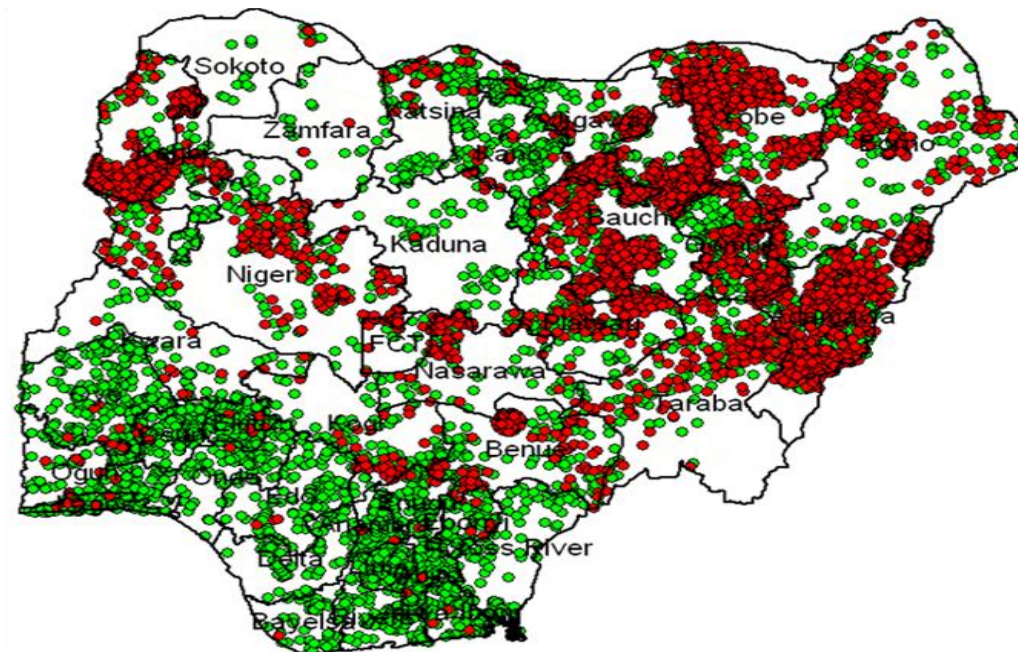
CURRENT MEASLES SITUATION IN NIGERIA COMPARED TO 2013.

Jan – Dec 2013



● Confirmed (n=55517)
● Suspected (n=59618)

Jan – Aug 2014*

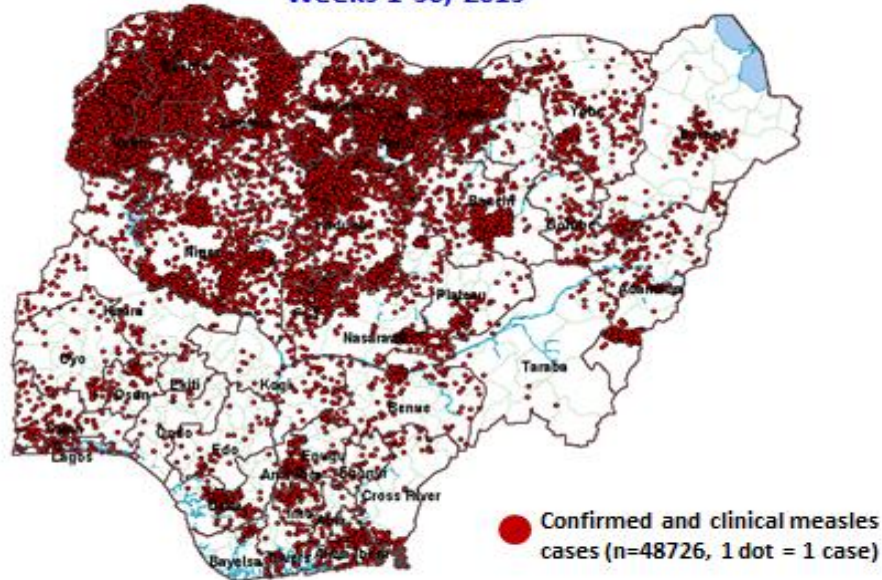


● Confirmed (n=3350)
● Suspected (n=7168)

CONFIRMED MEASLES CASES IN WEEK 36 2014 COMPARED SAME PERIOD 2013

2013

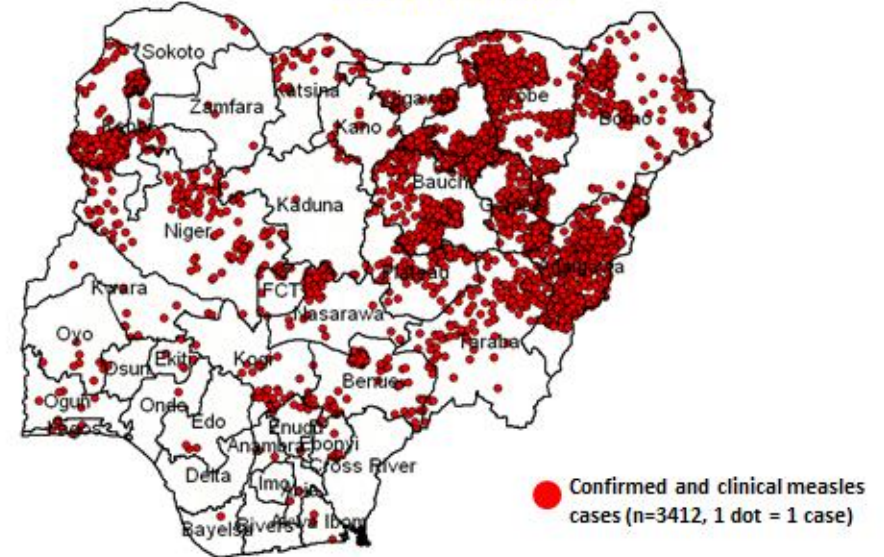
Distribution of confirmed (Lab + Epi Link + Clinical) measles Cases, Weeks 1-36, 2013



Source: Measles case based database as of 06 September 2013

2014

Distribution of confirmed (Lab + Epi Link + Clinical) measles Cases, Weeks 01-36, 2014

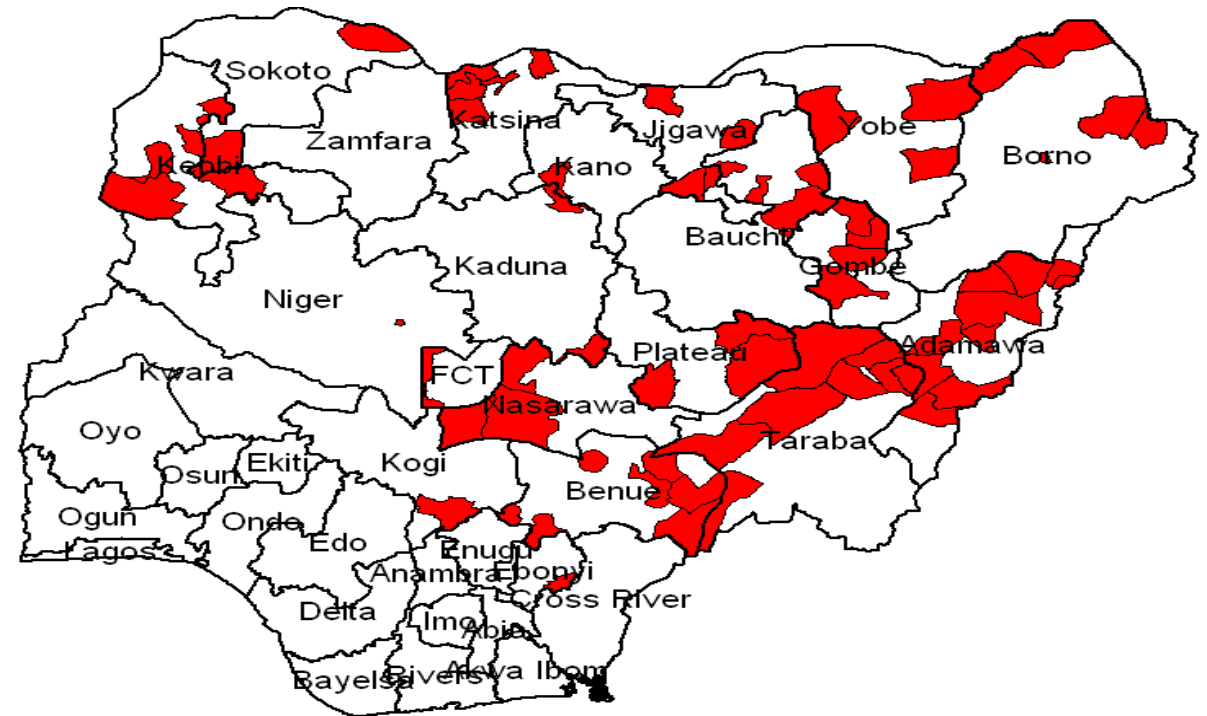
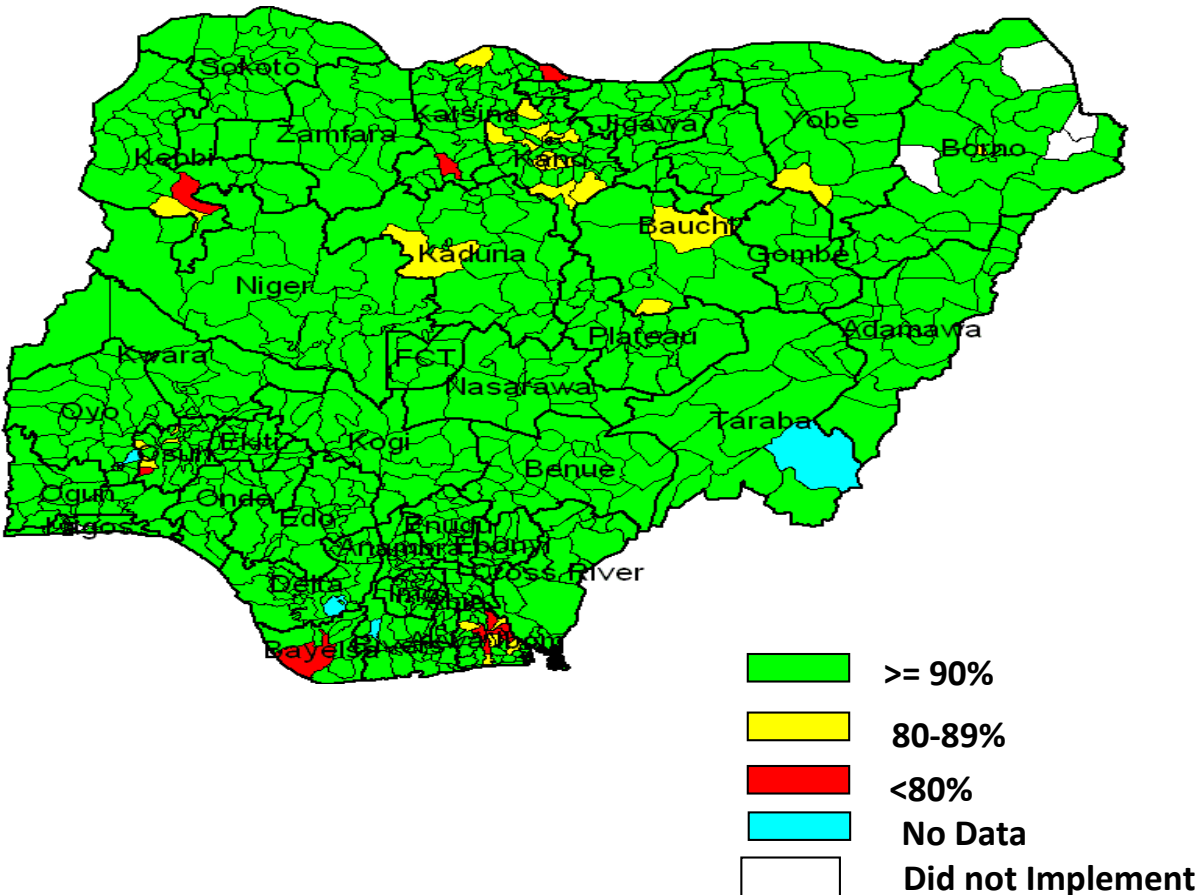


Source: Measles case based database as of September 04, 2014

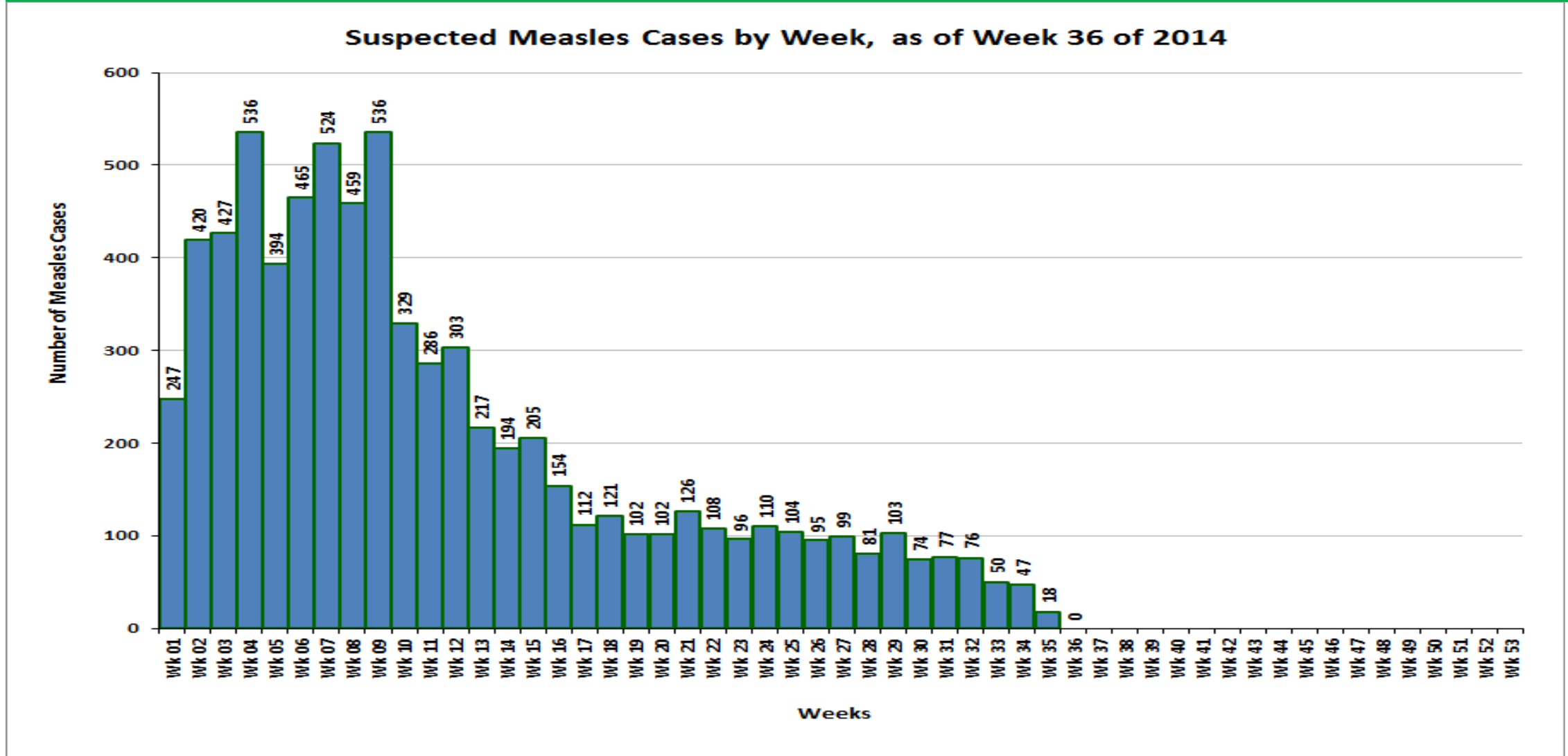
MEASLES INTERVENTIONS & OUTBREAKS

Measles Coverage Oct/Nov 2013 (IMC)

LGAs with Measles outbreak as at 04 Sept. (2014)

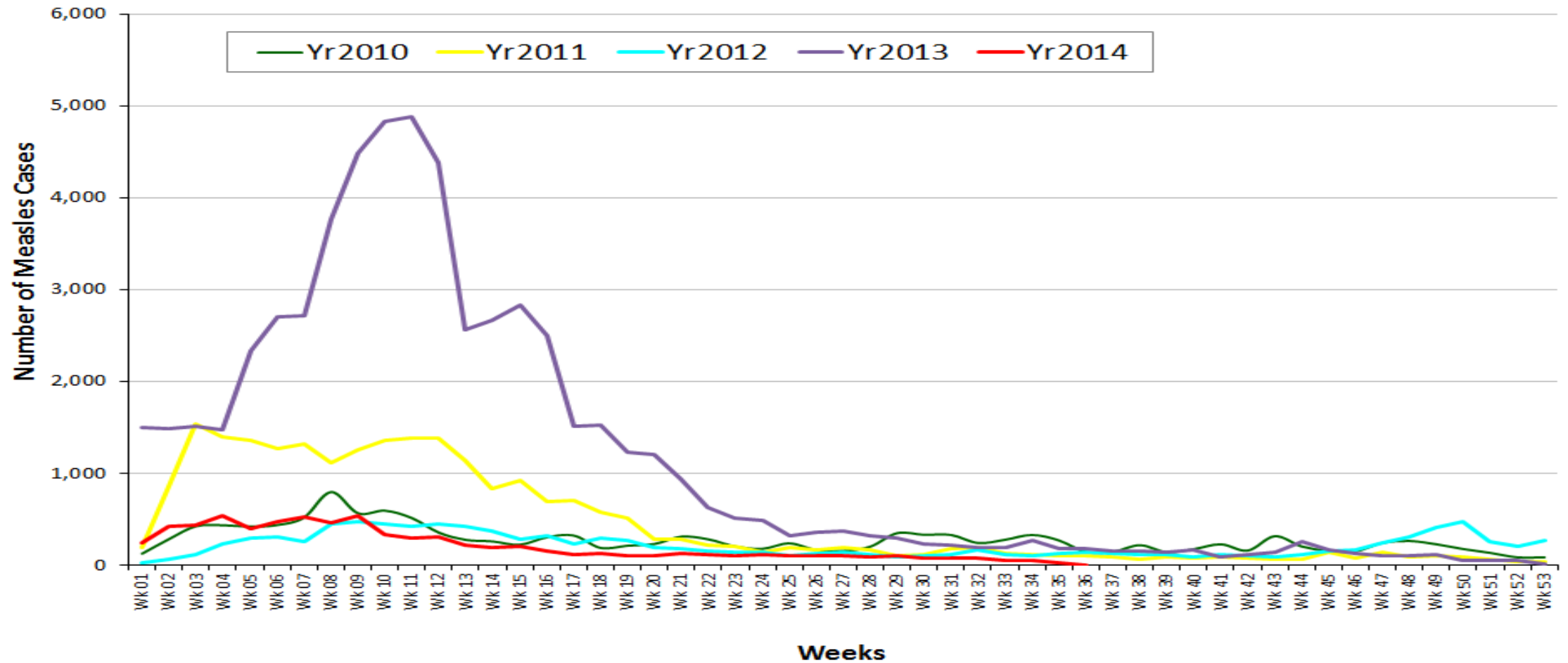


Suspected Measles cases by week from week 1-36 2014



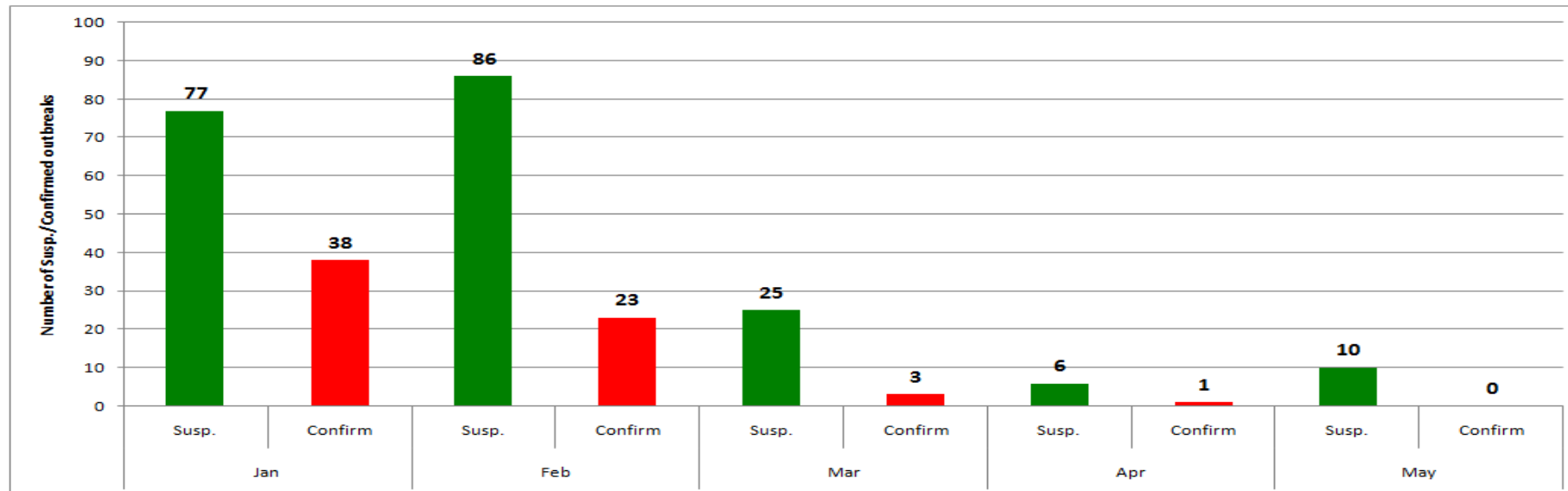
Source: Measles case based database as of September 04, 2014

WEEKLY ONSET OF MEASLES CASES FOR 5 YEARS, 2010-2014 (WEEK 01-36)



SUMMARY OF MEASLES OUTBREAKS, JAN - MAY 2014, NIGERIA

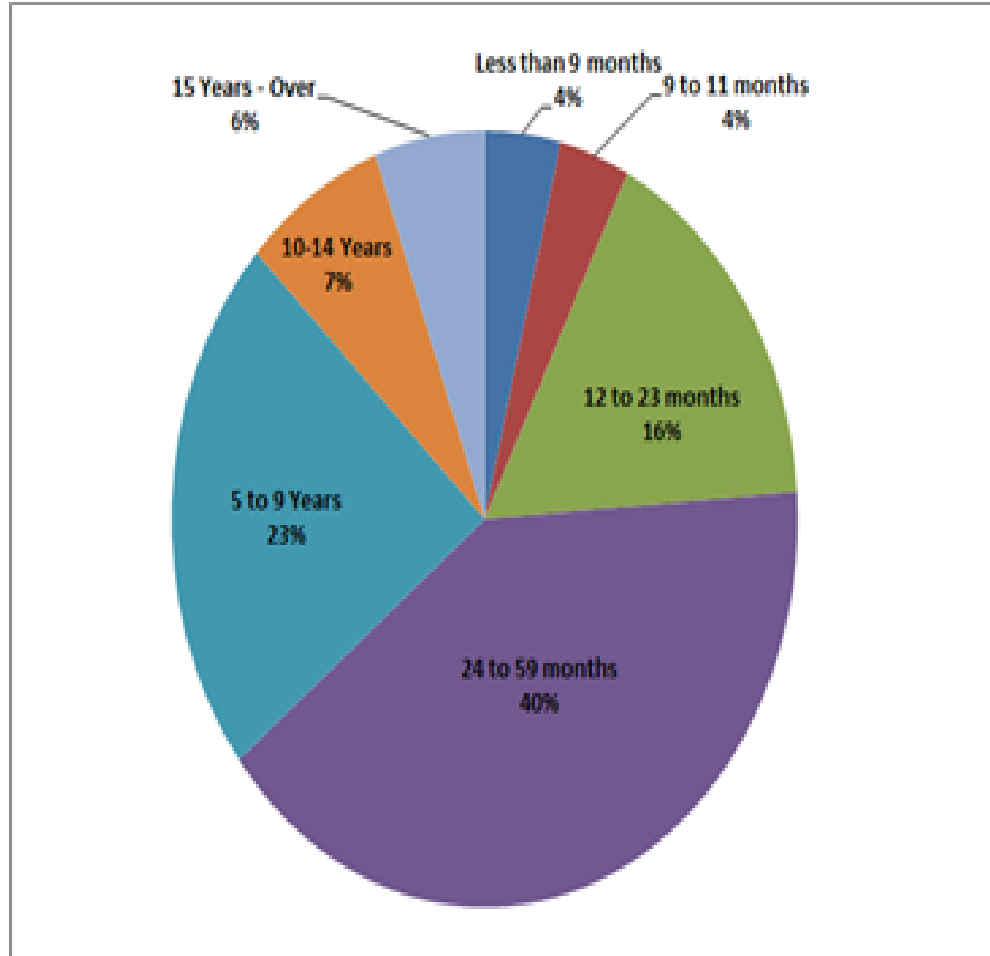
| Key: | | | | | | | | | | | | | |
|--------------------------------|-----------|-----------|-----------|-----------|-----------|----------|----------|----------|-----------|----------|------------|-----------|--|
| Suspected Measles Outbreak | | 1 | | | | | | | | | | | |
| Lab Confirmed Measles Outbreak | | 1 | | | | | | | | | | | |
| Zone | Jan | | Feb | | Mar | | Apr | | May | | Total | | |
| | Susp. | Confirm | Susp. | Confirm | Susp. | Confirm | Susp. | Confirm | Susp. | Confirm | Susp. | Confirm | |
| NCZ | 6 | 2 | 7 | 4 | 7 | 3 | 3 | 1 | 2 | | 25 | 10 | |
| NEZ | 42 | 22 | 43 | 14 | 9 | | | | 1 | | 95 | 36 | |
| NWZ | 16 | 13 | 16 | 5 | 1 | | 1 | | | | 34 | 18 | |
| SEZ | 4 | 1 | 4 | | | | | | | | 8 | 1 | |
| SSZ | 2 | | 1 | | | | | | | | 3 | 0 | |
| SWZ | 7 | | 15 | | 8 | | 2 | | 7 | | 39 | 0 | |
| National | 77 | 38 | 86 | 23 | 25 | 3 | 6 | 1 | 10 | 0 | 204 | 65 | |



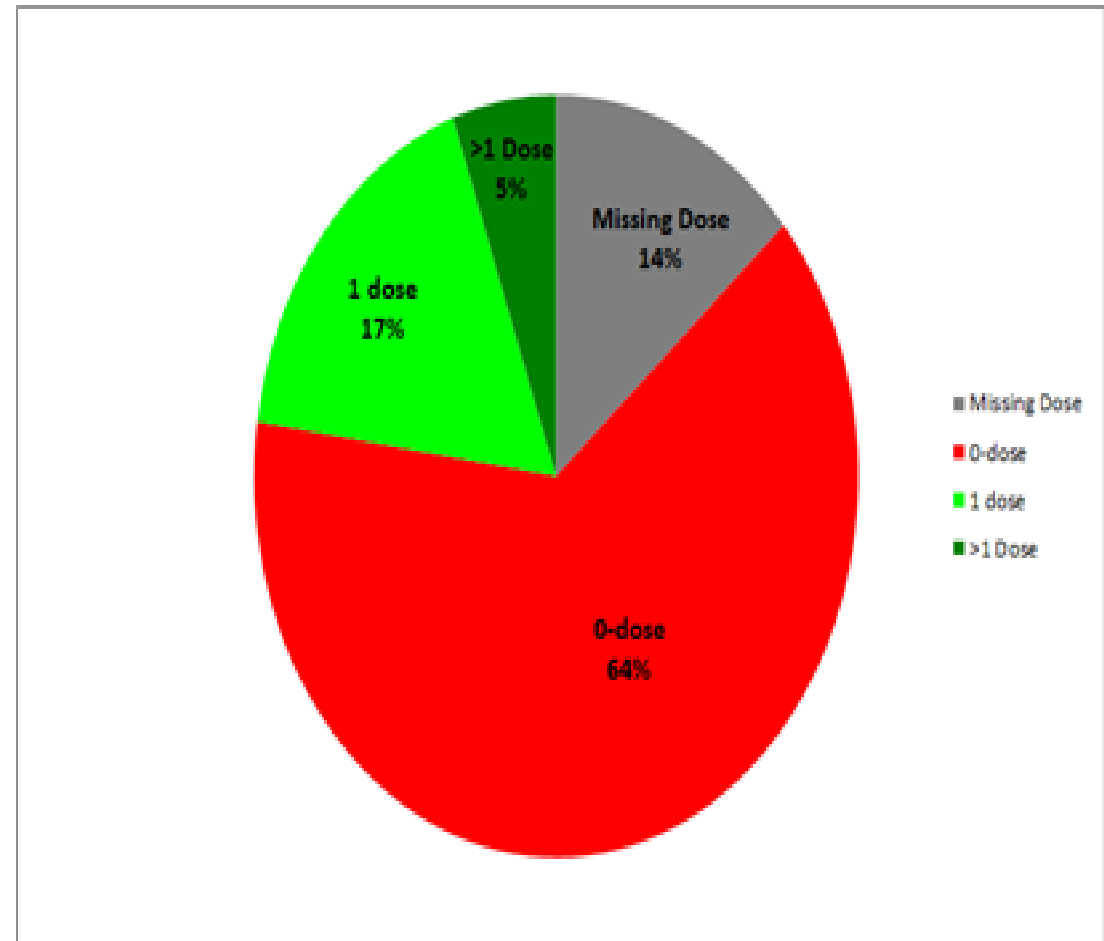
MEASLES SURVEILLANCE PERFORMANCE INDICATORS, NIGERIA, JAN - JUL 2014

| No. | Indicator | Performance | Target |
|-----|---|------------------|--------------------------|
| 1 | Annualized detection of suspected measles case | 8.3 | ≥ 2 |
| 2. | Annualized detection of Non Measles Febrile Rash Illness | 4.0 | ≥ 2 |
| 3 | Blood specimen collection | 76% | $\geq 80\%$ |
| 4 | Available lab results | 30% | $\geq 80\%$ |
| 5 | % districts that investigated at least one suspected case with blood specimen | 73% | $\geq 80\%$ |
| 6 | % measles IgM positives | 12.1% | $< 10\%$ |
| 7 | Measles incidence | 17.9 per million | < 6 per million / year |

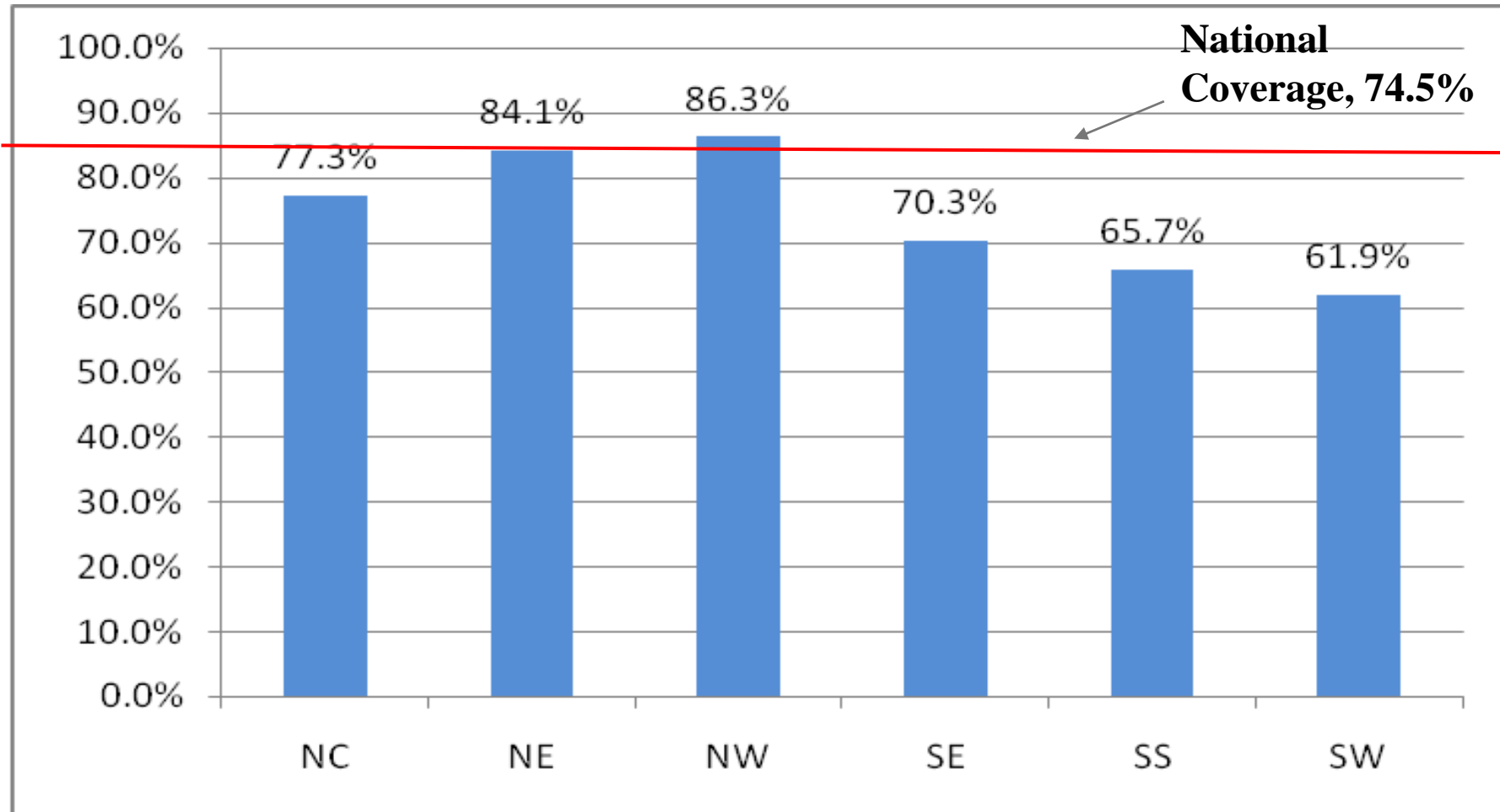
Age break down of Confirmed (Lab + Epi-Link + Clinical) Measles cases, Jan – Sep 2014 as at Week 36 (n=3412)



Vaccination Status of Confirmed (Lab + Epi Link + Clinical) Measles cases, Jan – Sep 2014 as at Week 36 (n= 3412)

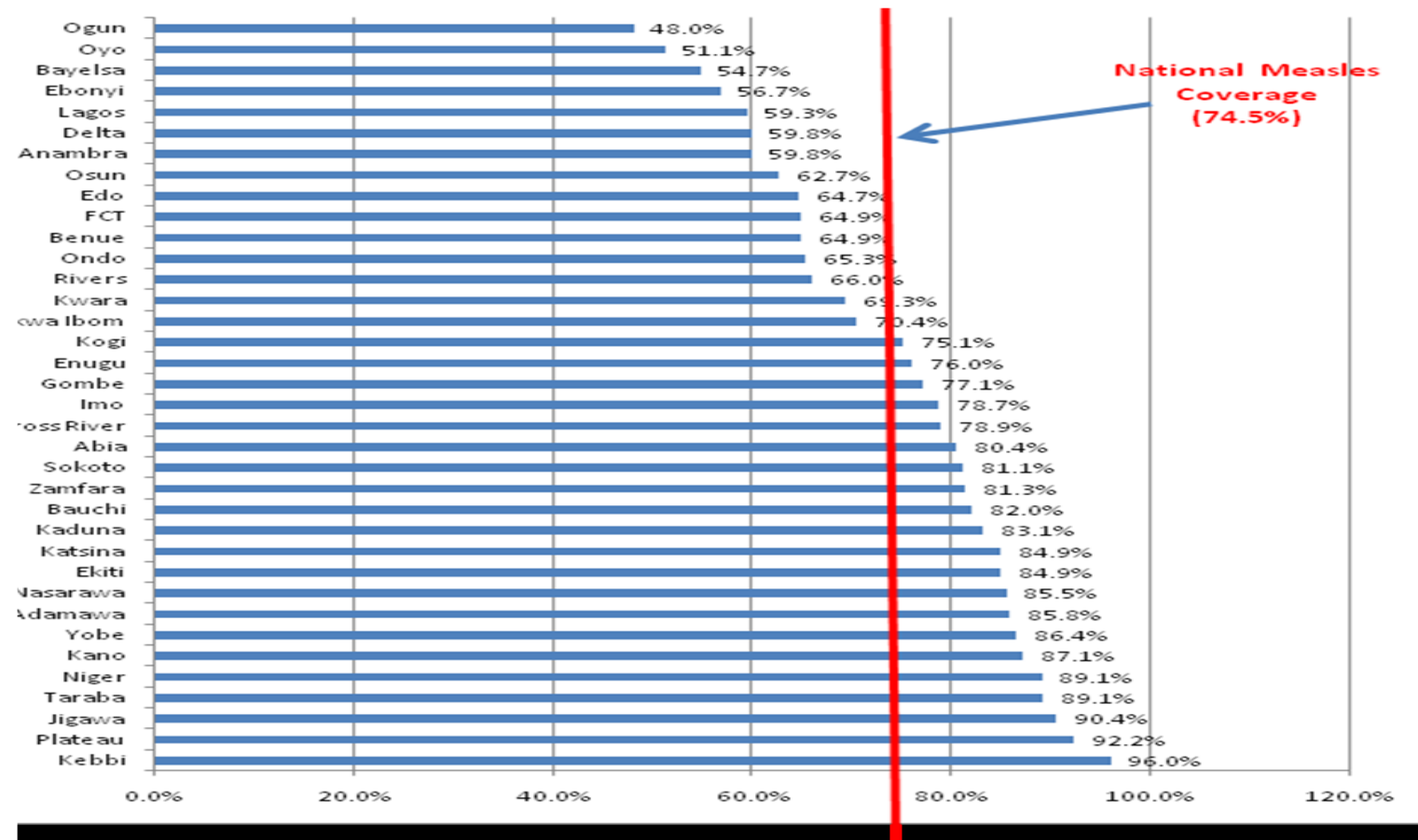


2013 IMC COVERAGE SURVEY RESULT BY ZONE ('CARD + HISTORY') (%)



2013 MEASLES COVERAGE BY STATE

A total of 15 out of 35 states achieved coverage between 80% and 90% and only 4 states reported coverage of 60% or less.



LESSONS LEARNT FROM 2013 IMC

- **Personnel & Funds-** Competing priorities and late release of funds.
- **Resource Mobilization (local and external) -** Late notification to States & LGAs & Non involvement of private Sector.
- **Monitoring and Supervision of Activities**
- **Multiple campings.** :Harmonization
- **Waste management-** Incinerators
- **Communication :** IEC materials , pluses
- **Poor card retention**
- Coverage survey conducted 6 months after the IMC
- **Injection devices-**Late arrival of syringes & Needles.

PLANS TO CONTROL MEASLES IN 2015 -2016

1. **National planning meeting in late September 2014.**
2. **Pre-epidemic vaccination in identified high risk LGAs (166) across the country (November 2014?)**
 - LGAs in security compromised areas
 - LGAs with low routine immunization
 - LGAs that have been reporting outbreaks after 2013 campaign
 - LGAs shown by Coverage Survey to have recorded low coverage

Note :Major Challenge may be vaccine availability

3. **Nation wide catch-up Campaign - Measles & Rubella - 2016**
 - Target Age Group – 9mo – 15years (92million/ 47.5%)

PLANS FOR CONTROL OF MEASLES IN 2015-2016 CONTD2

4. **Use of existing of polio structures to build sustained immunity in security compromised areas**
 - Firewalling :Use of permanent border post teams /market / motor parks
 - Collaboration with Port Health and Immigration to revive border post Immunization
 - Health camps to offer routine measles vaccine
 - Accountability framework- Reward & discipline LGAs based on performance
 - Prompt response to outbreaks using polio outbreak dashboard.

PLANS FOR CONTROL OF MEASLES IN 2015-2016 CONTD3

6. Ensure Quality campaigns are conducted by:

- Applying all the lessons learnt from 2013 follow-up campaign
- Use polio dashboard to monitor performance :pre-impl & impl activities
- Use attractive pluses, Community clowns , theatre etc
- Effective supervision and monitoring at all levels./Data magt & quality
- Use traditional/ religious and political systems in place to mobilize community

7. Strengthen Routine Immunization- Private partnership, outreaches, supervision, data management etc

8. Strengthen Surveillance.-Provide Measles kits/reagents , logistics (Hard to Reach Area) and develop sentinel sites for rubella etc

BUDGETS FOR MEASLES CATCH-UP 2016 CAMPAIGN

A. For Measles/Rubella with OPV

| | |
|--|----------------------|
| <input type="checkbox"/> Vaccine and devices | \$77, 911, 776 |
| <input type="checkbox"/> Operational cost | \$61,140 ,297 |
| <input type="checkbox"/> TOTAL | \$139,052,073 |

B. For Measles with OPV-

| | |
|--|-----------------------|
| <input type="checkbox"/> Vaccine and devices | \$42, 608,155 |
| <input type="checkbox"/> Operational cost | \$61,140,297 |
| <input type="checkbox"/> TOTAL | \$103,748, 452 |

Detailed budgets available

CHALLENGES AND CONCLUSION

- **Challenges:**

- Vaccine Availability
- Funding Gap/ cMYP 2016-2020
- 2010-2015 cMYP-No budgetary allocation for 2015/General election 2015
- Repeated outbreaks in border areas
- Availability of Measles Kit/ Reagents for surveillance
- Low Routine Immunization coverage/ Data management
- Weak surveillance system
- Competing priorities /multiple campaigns; MNTE, Y/F etc

- **Conclusion:**

With adequate vaccine availability and financial support from all the partners to execute all the plans Measles Elimination is achievable in Nigeria by 2020.

***THANK YOU FOR
YOUR
ATTENTION.....!!!***

EXTRA SLIDES

PREVIOUS SIAS

LOW COVERAGE = MEASLES OUTBREAKS

- **Measles campaigns for 2nd dose**

- 2005 /2006 (9 months-15 yrs)

- Coverage 95% (Northern States) and 83% (Southern States)
- Quality Excellent**

- 2008 (9 months- 59 months)

- Coverage 93 %
- Quality Excellent**

- Jan 2011 (9 months- 5 9 months)

- Coverage 94%
- Quality good in many States, but not all**
- 16 states failed to achieve the required 95%
- 3 states did not participate at the time of the campaign

FOLLOW UP CAMPAIGN PLAN IN 2013

PHASE 1 – October 5th – 9th 2013

19 Northern states

Target population : 15,988,779

PHASE 2 - November 2nd – 6th 2013

Southern states

Target population : 13,699,985

Vaccines required – 35.1m doses

Integration with OPV and Vit A

Vaccination strategy – fixed and mobile

Field guide needs a review in view of innovations (vaccination cards, mop ups, keep ups, coverage survey, ----)

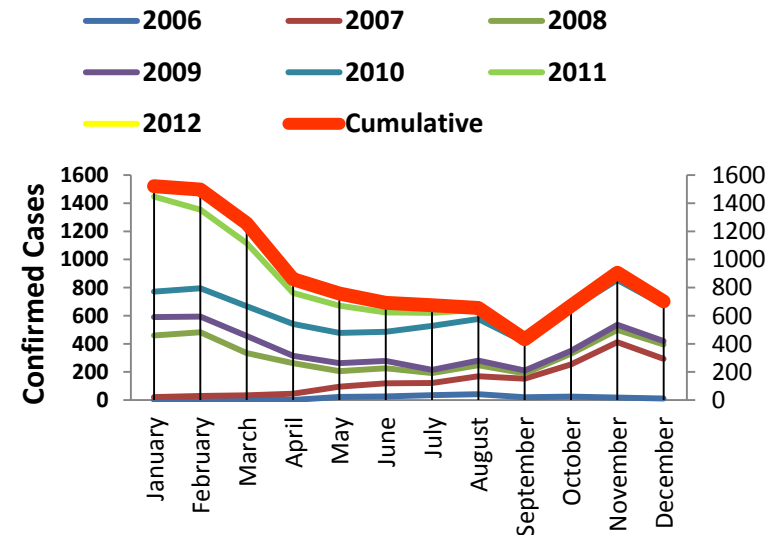
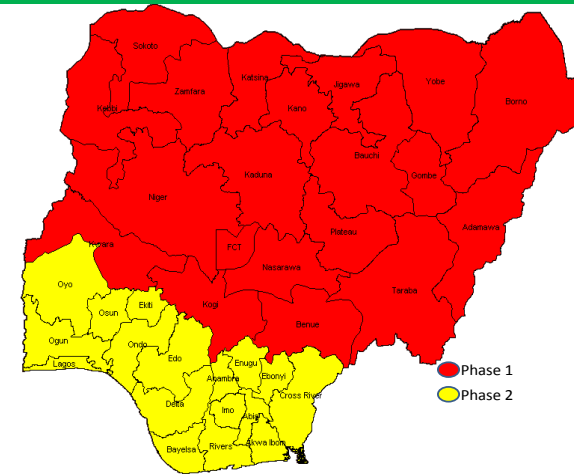


Fig 4: Seasonal Variation Measles Outbreaks 2006-2012